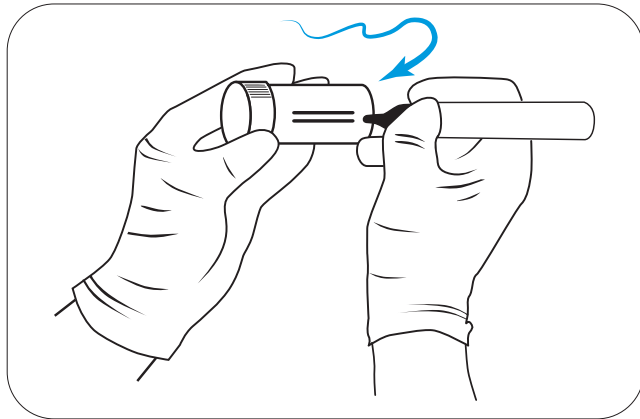


1 HOW TO TAKE A MILK SAMPLE



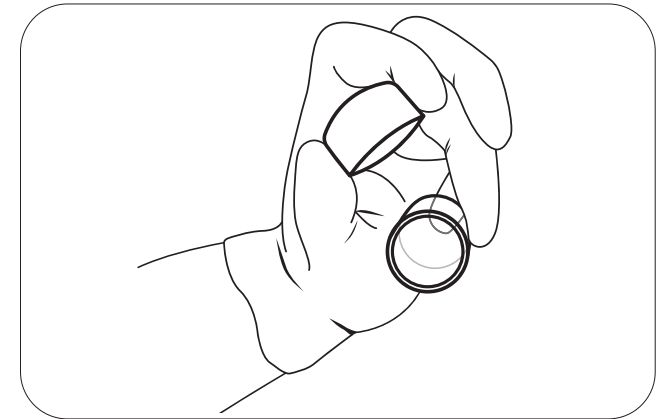
1 | RECORD

Record cow number, quarter and date on the pottle. Use clean gloves.



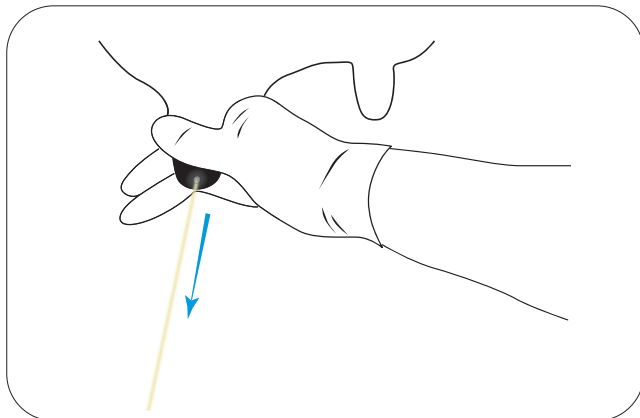
2 | CLEAN TEAT

Scrub each teat end with a teat wipe or cotton wool ball soaked in teat disinfectant. Use new wipe / cotton ball until clean.



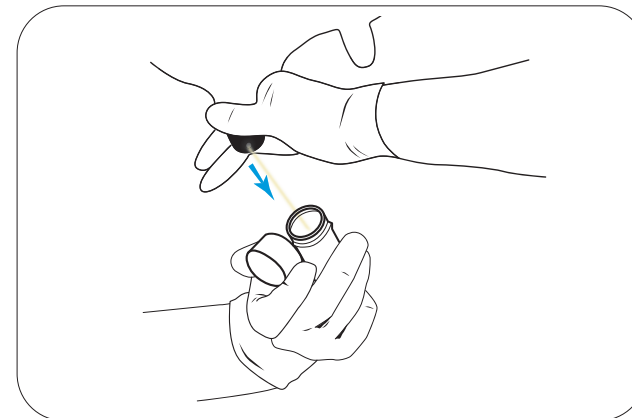
3 | PREPARE

Prepare tube. Remove lid, taking care not to touch inside of the lid or tube. Hold lid between thumb and finger inside down.



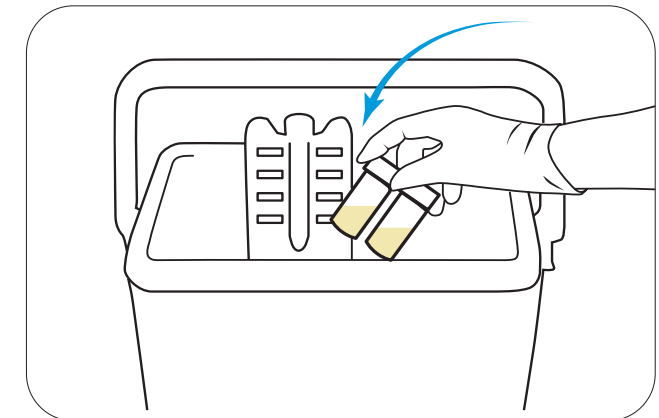
4 | DISCARD

Discard the first 2 to 3 squirts of milk. Warning: Milk should not be put on the ground.



5 | COLLECT

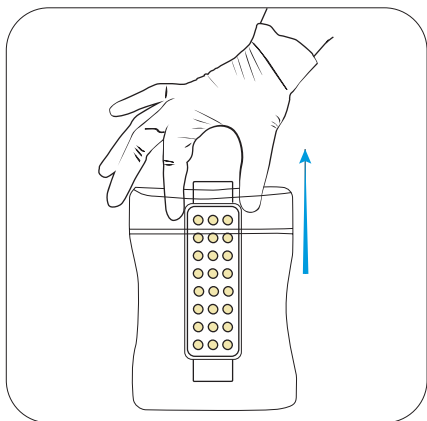
Hold pottle at 45 degree angle and half fill pottle with milk. Affix lid.



6 | START TEST OR REFRIGERATE

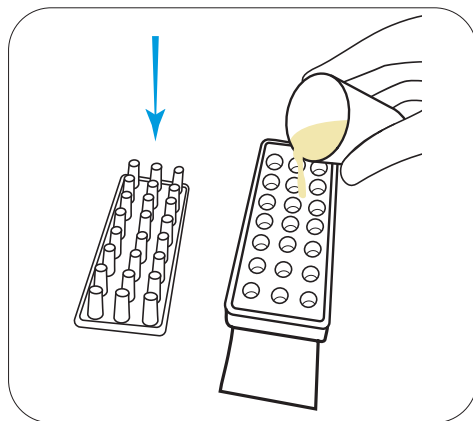
Start Mastatest® the same day, or alternatively refrigerate sample. The sample must be kept in the refrigerator at a maximum of 5 °C for no longer than 48 hours.

2 HOW TO RUN MASTATEST



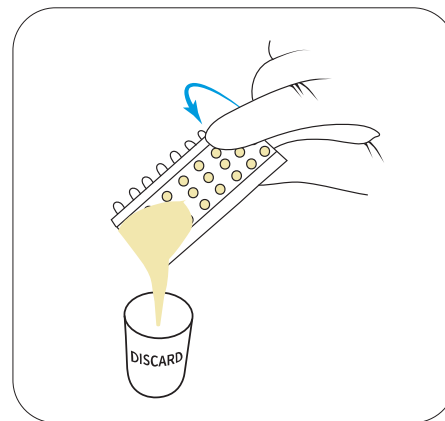
1 | OPEN

Wearing clean gloves, remove cartridge from pouch.



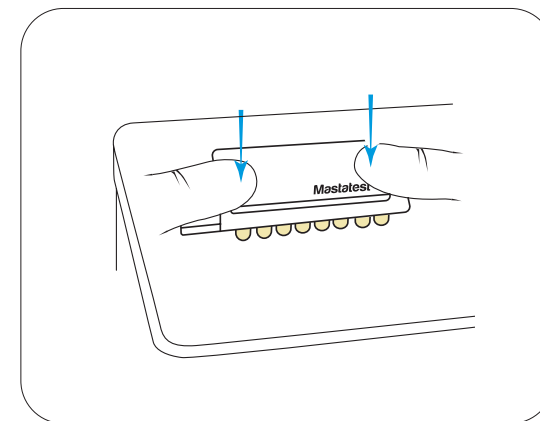
2 | ADD MILK SAMPLE

Remove lid and place lid upside down (ensure you do not touch the plungers). Fill the Mastatest® with milk until half full.



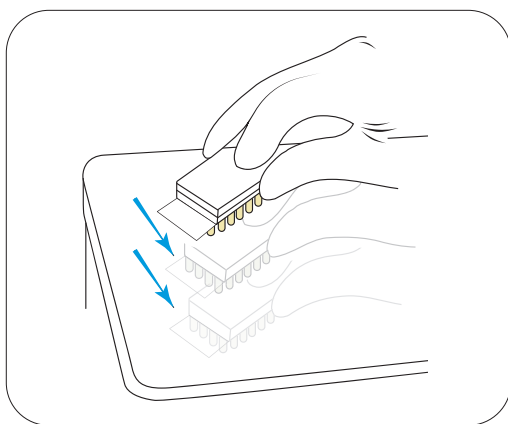
3 | DISCARD SURPLUS MILK

Pour off surplus milk, and discard. Do not put surplus back into milk sample.



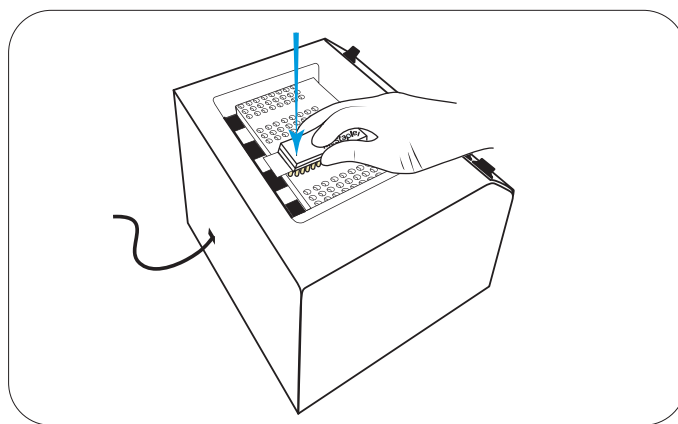
4 | REPLACE LID

Replace lid (ensuring it is centered) and push down firmly onto bench.



5 | TAP FIRMLY

It is important to tap firmly, twice.



6 | INSERT CARTRIDGE

Insert into Mastatest® lapbox with QR code label facing down and toward the back of the lapbox.



7 | START

Dial in the cow's number. Press enter to start test. Results sent via email within 24 hours.

- It is important not to contaminate the milk sample
- Wear clean gloves
- Keep all work surfaces clean by wiping with teat wipes

- Keep out of reach of children
- Veterinary product for animal use only
- After use drop the test in bleach before disposing in a suitable container